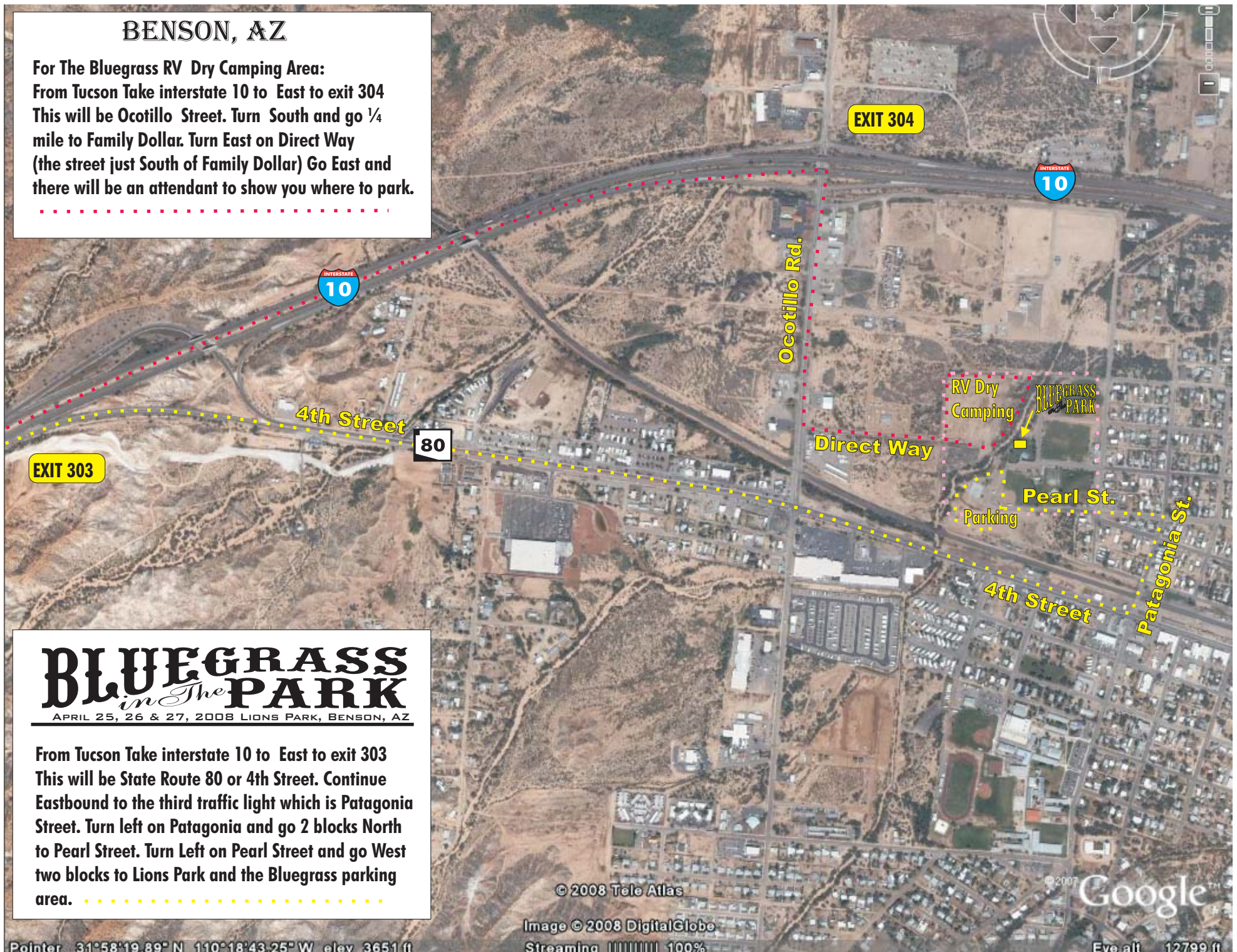


## BENSON, AZ

For The Bluegrass RV Dry Camping Area:  
From Tucson Take interstate 10 to East to exit 304  
This will be Ocotillo Street. Turn South and go ¼  
mile to Family Dollar. Turn East on Direct Way  
(the street just South of Family Dollar) Go East and  
there will be an attendant to show you where to park.



# BLUEGRASS *in The* PARK

APRIL 25, 26 & 27, 2008 LIONS PARK, BENSON, AZ

From Tucson Take interstate 10 to East to exit 303  
This will be State Route 80 or 4th Street. Continue  
Eastbound to the third traffic light which is Patagonia  
Street. Turn left on Patagonia and go 2 blocks North  
to Pearl Street. Turn Left on Pearl Street and go West  
two blocks to Lions Park and the Bluegrass parking  
area.

© 2008 Tele Atlas

Image © 2008 DigitalGlobe

Streaming 100%

© 2007

Google

Pointer 31°58'19.89" N 110°18'43.25" W elev 3651 ft

Evo all 12799 ft