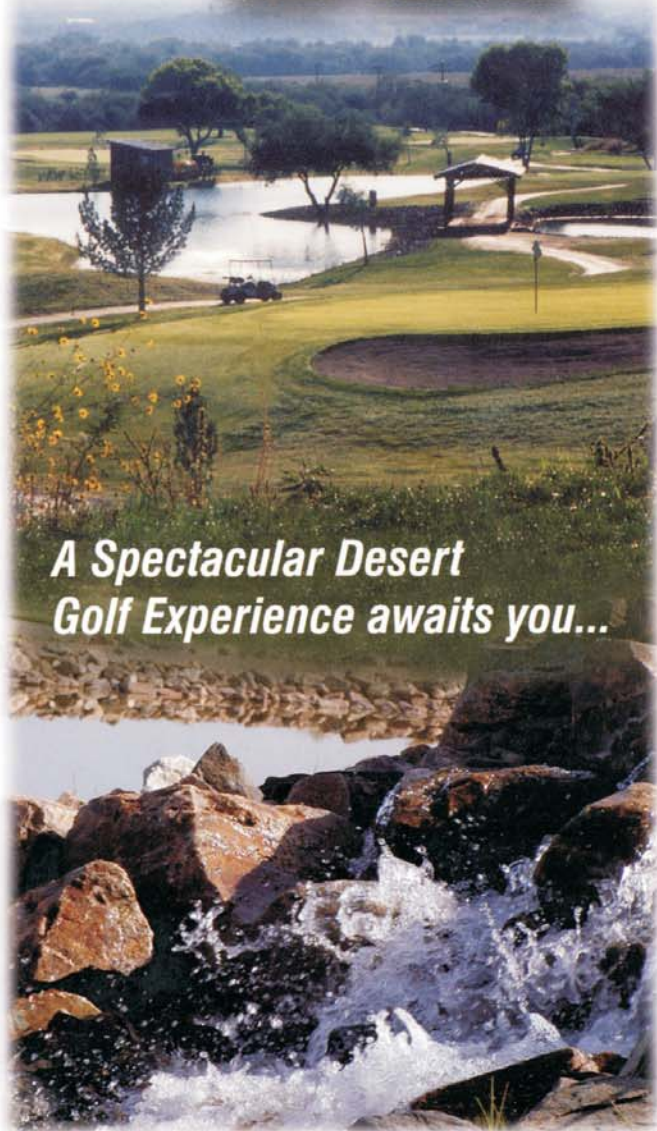




**TURQUOISE
HILLS**
FAMILY
GOLF CENTER



*A Spectacular Desert
Golf Experience awaits you...*



**Southern Arizona's
Finest Executive
Golf Course!**

Situated near the San Pedro river in Benson at 3600 ft. elevation, our course provides a refreshing break from the

scorching summer temperatures of Tucson and Phoenix. Elevated tees and greens afford a panoramic view of the luxurious setting. Lush landscaping, a five-tiered waterfall, and ponds set the stage for our exquisite *Triple Green*. Experience the charm of Arizona's "hidden gem."

- We offer:**
- 18-hole par 58 executive course
 - Affordable year-round green fees
 - Spacious restaurant & lounges
 - Banquet & meeting facilities
 - Fully stocked pro shop
 - Rental carts, ride or pull
 - Miniature golf

Green Fees:

| | |
|---------|----------|
| 9 holes | 18 holes |
| \$10.00 | \$18.00 |

Cart Rental:

| | |
|---------|----------|
| 9 holes | 18 holes |
| \$10.00 | \$15.00 |

Summer Rates:

\$15.00 with cart
after 11:a.m.



Turquoise Hills Family Golf Center

800 E. Country Club Drive
(E. of Highway 80) in Benson
Pro Shop (Reservations) 520-586-7535
www.turquoisehills.com

*Also visit our sister championship course in Naco -
Turquoise Valley Golf & RV Resort.
Play The Rattler - our 747 yd par 6.
Call 520-432-3091*